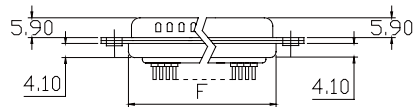
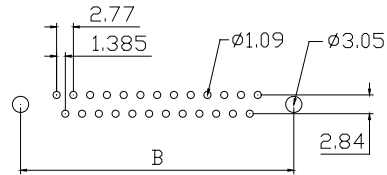
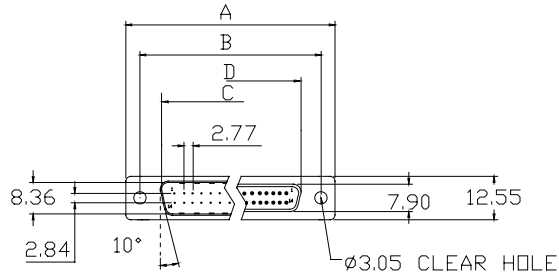


SPECIFICATION

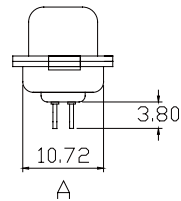
Current Rate: 5 AMP
 Insulation Resistance: 1000mΩMin
 Contact Resistance: 20mΩMax
 Dielectric voltage: 1000V AC for one minute
 Operation Temperature: -55°C to +105°C

MATERIAL

Insulator: Polyester,UL94v-0
 ©Standard: P.B.T
 Contact Pin F: Phosphor Bronze
 M: Brass
 Shell-Steel zinc plated or tin plated or nickel plated
 Screw-Brass nickel plated



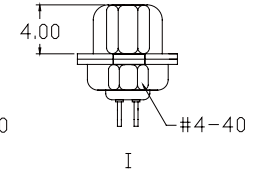
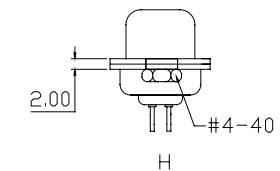
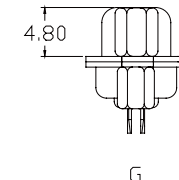
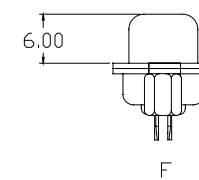
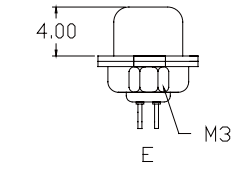
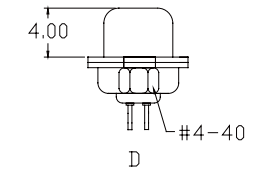
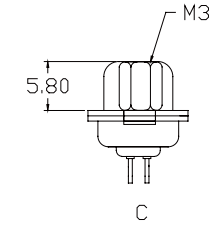
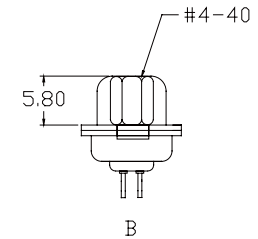
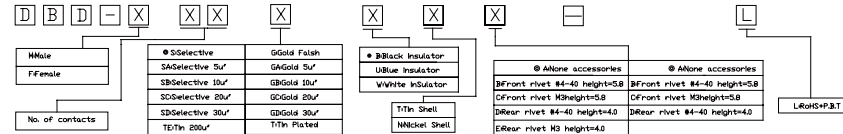
Recommended PCB Layout
 (PCB TOLERANCE±0.05)



Dimensions

POSITION	A	B	C	D	E	F
9	30.81	24.99	16.92	16.33	11.08	19.20
15	39.14	33.32	25.50	24.66	19.39	27.70
25	53.04	47.04	38.96	38.38	33.24	41.10
37	69.32	63.50	55.42	54.84	49.86	57.30

ORDER INFORMATION



APPRO

CHECK

DRAWN

PART NO. DBD-XXXXXXXX-L

ITEM NO.

DRAW NO.

UNIT

mm

SCALE

no

TOLER

NO.

DESCRIPTION

